

U35-4 OPTIONS

STANDARD EQUIPMENT

Safety system

- Engine start safety system
- Travel motor with disc brake
- Swivel motor with disc brake
- All hydraulic control

Working equipment

- Auxiliary hydraulic circuit 1 with proportional control on right control lever
- 2 working lights on cab and 1 light on the boom
- Dozer blade with float function
- Thumb bracket and relief valve

Operator's Space

- ROPS/OPG (TOP Guard, Level I) canopy
- Weight-adjustable full suspension seat
- Retractable seat belt
- Hydraulic pilot control levers with wrist rests
- Travel levers with foot pedals
- Two pattern selection system
- Digital panel with diagnosis function
- 12V power source
- Cup holder
- Horn

Engine/Fuel system

- Double element air filter
- Auto idling system
- Water separator with drain cock

Undercarriage

- Dozer blade with float
- 11.8" (300mm) rubber track
- 1 × upper track roller
- 5 double-flange track rollers on each side
- 2-speed travel switch on dozer lever
- 2-speed travel with auto-shift

Hydraulic system

- Pressure accumulator
- Hydraulic pressure checking ports
- Straight travel circuit
- Third line hydraulic return
- 2 variable pumps and 1 gear pump
- Adjustable maximum oil flow on auxiliary hydraulic circuits 1
- Auxiliary switch (AUX1) on right control lever

Others

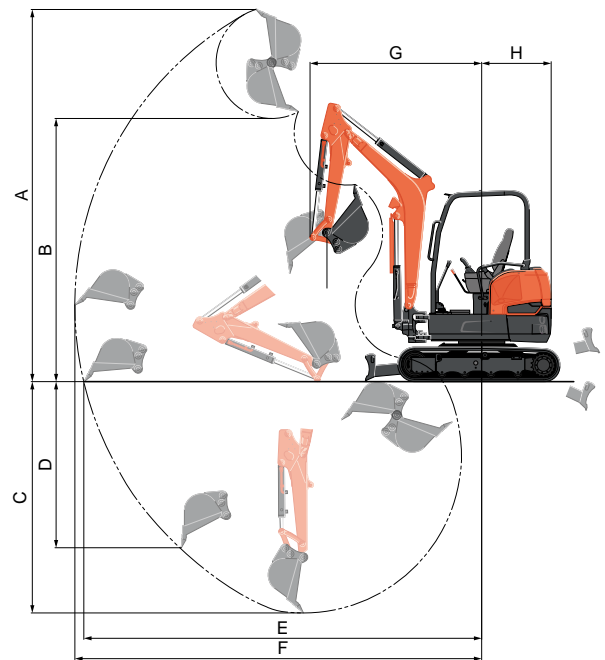
- Tool box
- Grease gun holder

OPTIONAL EQUIPMENT

- Cab with A/C
- Canopy lights
- Rear working lights
- Beacon lights
- Angle blade with float function and BOE
- Travel alarm
- Spark arrest muffler

WORKING RANGE

Model			U35-4
A	Max. digging height	ft. in. (mm)	15'10.7"(4844)
B	Max. dumping height	ft. in. (mm)	11'0.7"(3370)
C	Max. digging depth	ft. in. (mm)	9'8.9"(2970)
D	Max. vertical digging depth	ft. in. (mm)	6'7.3"(2013)
E	Max. digging radius at ground	ft. in. (mm)	16'11.3"(5165)
F	Max. digging radius	ft. in. (mm)	17'3.6"(5272)
G	Min. turning radius	W/O swing ft. in. (mm)	7'4.6"(2250)
		W swing ft. in. (mm)	5'9.1"(1755)
H	Min. tail turning radius	ft. in. (mm)	2'11.5"(901)

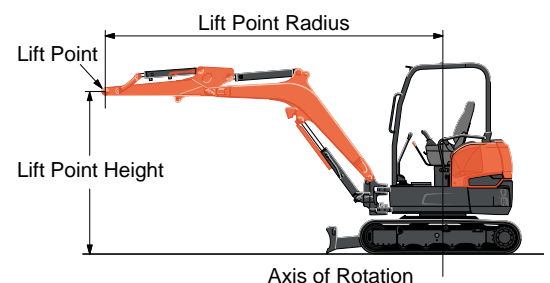


LIFTING CAPACITY

Canopy rubber

LIFT POINT HEIGHT (ft)	LIFTING CAPACITY OVER-FRONT BLADE DOWN unit=1000 lbs			LIFTING CAPACITY OVER-SIDE unit=1000 lbs		
	LIFT POINT RADIUS (ft)			LIFT POINT RADIUS (ft)		
	8	12	14	8	12	MAX
6	1.95	1.36	1.28	1.95	1.11	0.87
4	2.73	1.53	1.35	1.96	1.08	0.85
2	3.23	1.68	1.41	1.88	1.05	0.84
GL	3.33	1.77	1.43	1.84	1.02	0.82

Machine with ROPS canopy and rubber crawler, without bucket

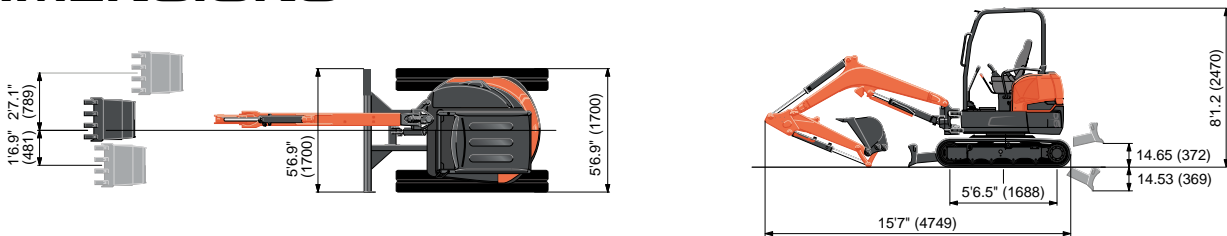


SPECIFICATIONS

Model		U35-4		U35-4 Angle Blade		
Type of ROPS / OPG (TOP Guard, Level I)		Canopy / Cab				
Type of tracks		Rubber / Steel		Rubber / Steel		
Engine	Model		Kubota D1703M-DI-E4			
	Output (SAE J1995 gross)		HP (kW) / rpm		24.8 (18.5) / 2200	
	Output (SAE J1349 net)		HP (kW) / rpm		23.9 (17.8) / 2200	
	Displacement		cu. in. (cc)		100.5 (1647)	
Dimensions	Overall length		ft. in. (mm)		15'7" (4749)	
	Overall height		ft. in. (mm)		8'1.2 (2470)	
	Overall width		ft. in. (mm)		5'6.9" (1700)	
	Min. ground clearance		in. (mm)		11.34 (288)	
Hydraulic system	Pump capacity		GPM (ℓ/min)		10.5 (39.6.) x 2 / 5.5 (20.9) x 1	
	Auxiliary hydraulic flow	AUX1	GPM (ℓ/min)		15.8 (60)	
	Max. breakout force	Bucket / Arm	lbs. (kgf)		7924 (3594) / 4451 (2019)	
Drive system	Travel speed		Low / High		mph (km/h)	1.9 (3.0) / 2.9 (4.6)
	Max. traction force		Low speed		lbs. (kgf)	6091 (2763)
	Tumbler distance		ft. in. (mm)		5'6.5" (1688)	
	Crawler length		ft. in. (mm)		6'10" (2084)	
	Shoe width		Rubber	in. (mm)		11.8 (300)
	Ground contact pressure		Rubber Canopy / Cab	psi (kgf/cm ²)		4.89 (0.34) / 5.08 (0.36)
		Steel Canopy / Cab	psi (kgf/cm ²)		5.00 (0.35) / 5.19 (0.36)	
Swing system	Unit swing speed		rpm		8.9	
	Boom swing angle	Left / Right	degree		71 / 45	
Blade	Dimensions		Width		ft. in. (mm)	5'6.9" (1700)
			Height		ft. in. (mm)	1'1.5" (343)
	Max. lift above ground		in. (mm)		14.65 (372)	
	Max. drop below ground		in. (mm)		14.53 (369)	
	Angle		Left / Right		degree	- / 25 / 25
Hydraulic oil (Reservoir / System)		gal (ℓ)		11.8 (44.6) / 16.1 (61)		
Fuel reservoir		gal (ℓ)		12.4 (46.9)		
Operating weight (Including operator's weight @ 175 lbs.)		Rubber Canopy / Cab	lbs. (kgf)		8129 (3687) / 8451 (3833)	
		Steel Canopy / Cab	lbs. (kgf)		8325 (3776) / 8647 (3922)	
					8478 (3845) / 8800 (3991)	
					8674 (3934) / 8996 (4080)	

The company reserves the right to change the above specifications without notice. This brochure is for descriptive purposes only. Please contact your local Kubota dealer for warranty information. For your safety, Kubota strongly recommends the use of a Rollover Protective Structure (ROPS) and seat belt for almost all applications.

DIMENSIONS



Unit: ft. in. (mm)



KUBOTA TRACTOR CORPORATION

Kubota Tractor Corporation, 3401 Del Amo Boulevard, Torrance CA 90503
 Western Division: 1175 S. Guild Ave., Lodi, CA 95240 Tel (209) 334-9910
 Central Division: 14855 FAA Boulevard, Fort Worth, TX 76155 Tel (817) 571-0900
 Northern Division: 6300 at One Kubota Way, Groveport, OH 43125 Tel (614) 835-1100
 Southeast Division: 1025 Northbrook Parkway, Suwanee, GA 30024 Tel (770) 995-8855

Visit our web site at: www.kubota.com

